

Classic Japan Rally 2018 R134 Spring Eve Party and Pre-Accommodation

We will be holding the Classic Japan Rally 2018 R134 Spring eve party at Blue Vista Riviera in Zushi Marina, the finish venue for the event. We also have provided accommodation for the previous and following night of the rally. So come and join us. Let's enjoy the party together.



Zushi Marina Blue Vista Riviera

●Eve Party

【Date】 Friday, March 16

【Time】 7:00-9:00pm

【Place】 Zushi Marina Blue Vista Riviera

【Dinner】 Buffet with free drink

【F e e】14,500 yen per person (tax and accommodation included)

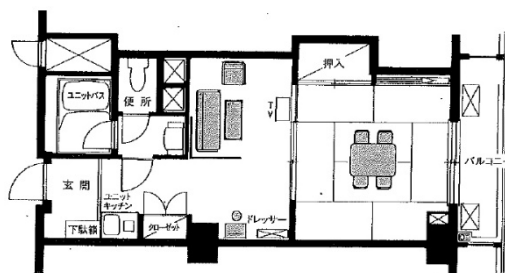
25,000 yen for two people (tax and accommodation included)

*The fees include the accommodation for the previous night and the eve party.

●Pre-Accommodation: Friday, March 16

Zushi Marina Condominium (Japanese-style room)

5-23-9, Kotsubo, Zushi-shi, Kanagawa 249-0007



Room Layout

*Only futon is provided.

*Please note that each room is a studio-type room (Japanese-style) for yacht racers and hotel services are not offered.

●Post-Accommodation: Saturday, March 17

For guests who wish to stay the following night, we offer Zushi Marina Condominium (Japanese-style room) at the room rates below.

- For one room: 7,000 yen (tax included) per night for one person
- For one room: 10,000 yen (tax included) per night for two people